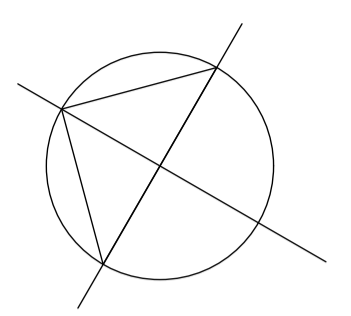
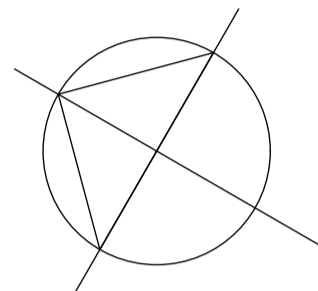


NOTE:
CONTRACTOR TO CHECK AND VERIFY ALL
DIMENSIONS, LEVELS, AND ANGLES ON SITE
BEFORE COMMENCING.

LOT 1 DP 69377 3232m ²	LOT 2 DP 69377 3094m ²	LOT 3 DP 69377 2688m ²
AREA SCHEDULE	AREA SCHEDULE	AREA SCHEDULE
RETAIL	NZ POST	GROUND FLOOR OFFICE
RETAIL STORAGE	RETAIL GF	FIRST FLOOR OFFICE
TOTAL	PALATES 1ST F.	TOTAL
643m ²	1062m ²	210m ²
400m ²	100m ²	281m ²
1043m ²	174m ²	1405m ²
	1428m ²	95 m
		1991m ²



COUNCIL/ PUBLIC FOOT PATH
INTERSITE EXPOSED AGGREGATE EXTERIOR PATHWAYS. (MACULLOMS RED CHIP OR SIMILAR)



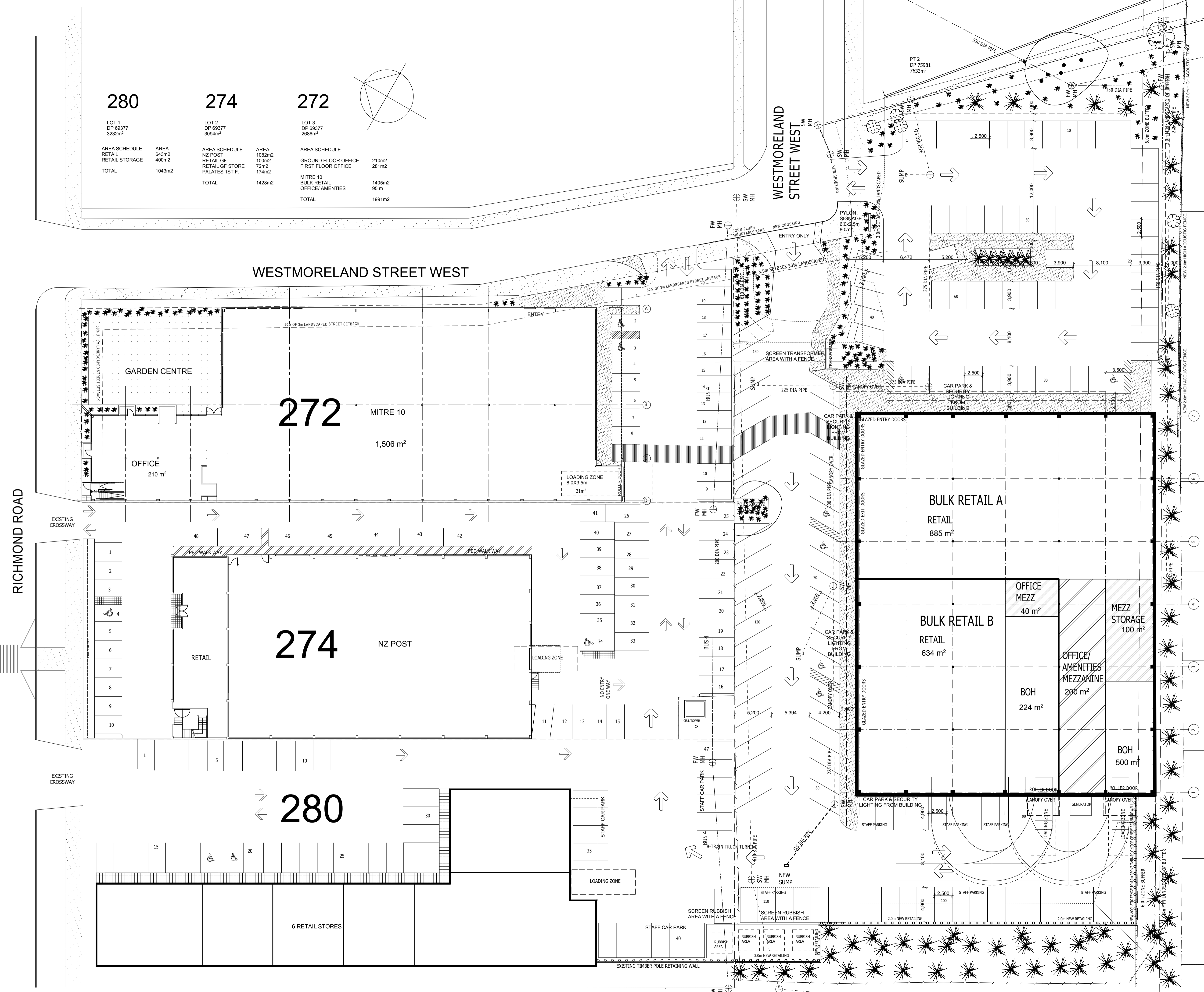
AREA SCHEDULE

RETAIL A	AREA	PARKS
RETAIL	885m ²	52.1
BOH	500m ²	12.5
MEZZ STORAGE	100m ²	2.5
MEZZ OFFICE	200m ²	5.0
TOTAL	1685m ²	72.1

RETAIL B	AREA	PARKS
RETAIL	634m ²	37.3
BOH	40m ²	1.0
MEZZ OFFICE	224m ²	5.6
TOTAL	898m ²	43.9

BOMA - 2243m²

CAR PARKS PROVIDED - 131
CAR PARKS REQUIRED - 116
EXCESS OF 15 PARKS



B 28/7/11 RC
A 8/7/11 Preliminary

ISSUE	DATE	DESCRIPTION



AVERY TEAM ARCHITECTURE LTD
Unit 101, Zone 23 Edwin St. Mt Eden,
PH. (09) 638 4449 P.O. BOX 37701, Parnell,
FAX. (09) 638 4044 AUCKLAND, NEW ZEALAND
e-mail: studio@averyarchitects.co.nz
website at http://www.averyarchitects.co.nz
ASSOCIATED OFFICES:
WAIKATO, TARANAKI, HAWKE'S BAY, WELLINGTON,
CANTERBURY, WEST COAST, OTAGO
CONSULTANTS

PROJECT
Proposed Commercial Development
for APGL.

34 Westmoreland St.
Grey Lynn

TITLE
Proposed Site Plan

DRAWN DM
SCALE 1:250 @ A1 1:500 @ A3
JOB NO. SHEET NO. ISSUE

3537 RC20 B

COPYRIGHT
The copyright of these drawings and all parts thereof
remain the property of Avery Team Architecture Ltd.